



**MOVE INN ESTATES**

MAKING THE RIGHT MOVE



**Sutton Way**

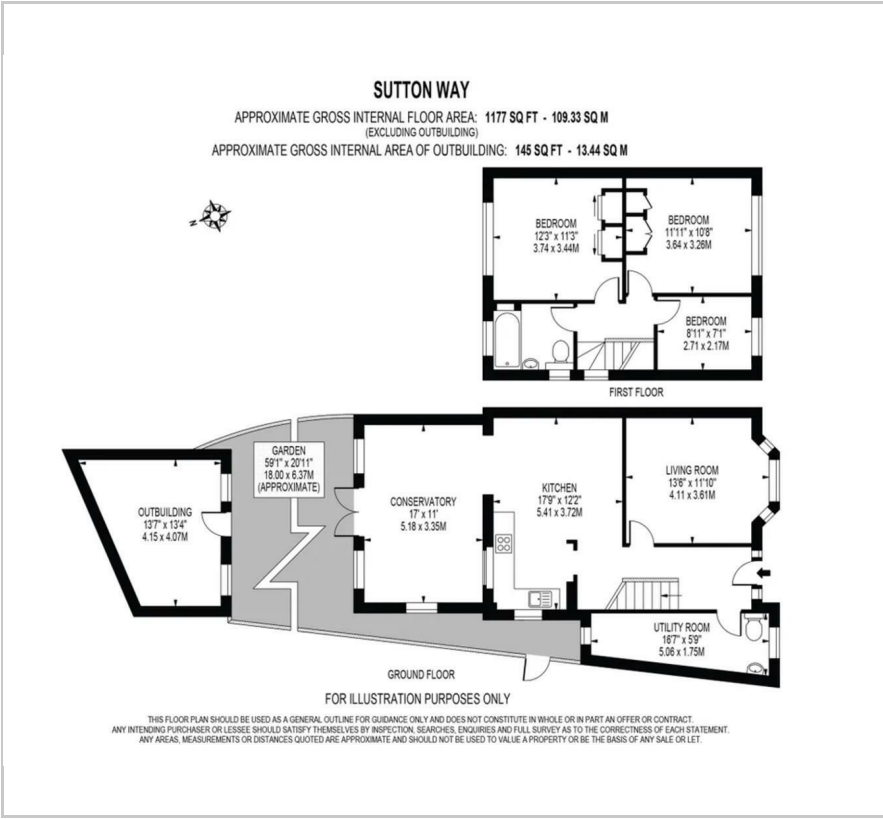
, Hounslow, TW5 0JA

**Offers In The Region Of £750,000**

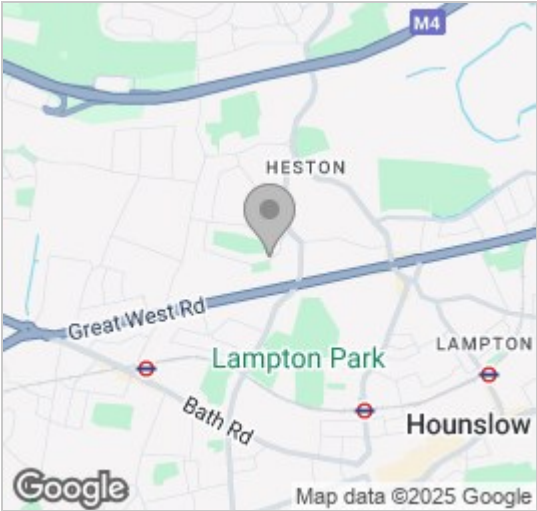




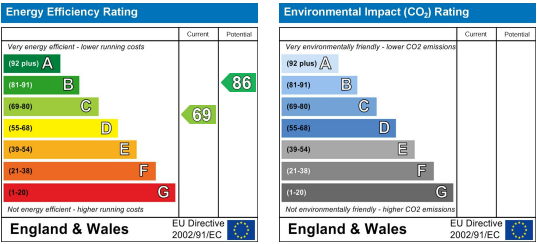
Floor Plan



Area Map



Energy Efficiency Graph



Viewing

Please contact our Move Inn Estates - Sales Office on 0208 574 4966 if you wish to arrange a viewing appointment for this property or require further information.

- Highly Sought After ■ Extended Semi-Detached Location
- Large Reception Room ■ No Chain
- Front Driveway for Off Street ■ Potential To Extend (STPP) Parking



Located in the heart of Heston, Move-in Estates are proud to present this immaculate larger-than-life 3-bedroom Semi-Detached House for sale. The property comprises high-quality furnishings throughout, wooden flooring, spotlights, and excellent natural light. Large through lounge with high ceilings, a separate good-sized brand-new fitted kitchen, complete with dishwasher and all other modern integrated appliances. Utility room complete with washing machine and ground floor WC. Added benefits of a well-maintained private garden and off-street parking. High standard finish throughout. Two double bedrooms and one single. Family bathroom suite including bath and shower. Sutton Way is ideally located just off Church Road giving you easy access to numerous shops and amenities. Great choice of transport links to surrounding areas including night bus service. Local schools are just a short walk away.



These particulars, whilst believed to be accurate are set out as a general outline only for guidance and do not constitute any part of an offer or contract. Intending purchasers should not rely on them as statements of representation of fact, but must satisfy themselves by inspection or otherwise as to their accuracy. No person in this firm's employment has the authority to make or give any representation or warranty in respect of the property.